



CYTOGENETIC ANALYSIS OF SALIVARY GLAND CHROMOSOMES OF *CULEX QUINQUEFASCIATUS* (DIPTERA: CULICIDAE)

AZRA PARVEEN¹ AND ARTI PRASAD²

Insect Microbial and Herbal control laboratory, UCOS, MLSU, Udaipur (Raj) 313001

ABSTRACT

Dipterans contain polytene chromosomes which serve as an excellent tool for understanding species complexes, as well as structural and functional cytogenetic analysis. Salivary gland chromosomes preparation in *Culex* species is quite tedious. A number of techniques are available, but only few are reproducible. The problems arise because the culex polytene chromosome is long and fragile, invested with ectopic pairings and sticky ends. In this paper we have followed a simple and reproducible method which gives good polytene chromosomes preparation from *Culex quinquefasciatus*. The preparation results showed banded polytene chromosome with five arms attached at a common point called chromocentre. We observed several special features like asynapsis, heterochromatin body etc.

Key words: polytene chromosome, chromocentre, culex quinquefasciatus, cytogenetic

INTRODUCTION

Mosquito-borne infectious diseases pose unacceptable risks to public health and welfare (Tolle, 2009). Among mosquitoes, species of the genus *Culex* are the most taxonomically diverse and geographically widespread (Reddy, 2012 and Vinogradova, 2000). *Culex quinquefasciatus* is principal vector for filariasis. The chromosome maps are fundamental tools to provide good cytogenetic analyses of these mosquitoes, which is of medical and economic importance. Mapping and sequencing of the genomes for three major mosquito genera namely *Anopheles gambiae* (Holt *et al.*, 2002), *Aedes aegypti* (Neneet *et al.*, 2005) and *Culex quinquefasciatus* (Arensburger *et al.*, 2010) provides important facts about genetic diversity of mosquitoes and evolution of the mosquito-pathogen relations (Bartholomay *et al.*, 2010). But when compared to other mosquitoes, *Culex quinquefasciatus* has the most fragmented genome. The cytogenetic and molecular biology of the Culicidae can be studied by analyzing the structure and function of their polytene chromosome. *Culex pipiens* is described as a species complex (Sirivanakarn and White 1978, Hemingway and Karunaratne, 1998). Salivary gland polytene chromosomes have been used in cytogenetic analyses of this complex (Sutton 1942, Kitzmiller & Clark 1952, Kitzmiller & Keppler 1961). Its salivary glands harbour polytene chromosome the preparation of which in our laboratory was our target. Sutton (1942) described the salivary gland chromosomes of *Culex pipiens* L. as being three pairs, synapsed along most of their lengths.

Kitzmiller and Clark (1952) and Kitzmiller and Keppler (1961) explained the preparation of the salivary gland chromosomes for the subspecies *pipiens*. Dönhöfer (1968), Kanda (1970), Tewfik & Barr (1974), Verma *et al.*, (1987) described and mapped the salivary gland chromosomes of the subspecies *quinquefasciatus*. The problems encountered in the preparation of these chromosomes have also been recorded by almost everybody who has worked with Culicine species. Kanda (1970) found it was very rare to see free ends of the chromosomes, and Tewfik and Barr (1974) felt that good preparations in this system, with 3 completely separated chromosomes, were difficult to obtain. Chaudhry (1981) described that these chromosomes were long, fragile, and spread with difficulty, and that it was impossible to make out the exact location of centromeres. Verma *et al.* (1987) and Patnaik *et al.* (1989) also reinforced technical difficulties in the preparation of polytene chromosomes in *Culex*. Certain promising methods were tried by different persons several times, with many modifications. Recently, a simple and reproducible technique for obtaining well-spread and readable polytene chromosomes from the malpighian tubules of *Culex quinquefasciatus* was developed (Acharya, 1994). Polytene chromosomes are very important for the study of multiple aspects of the organization of the chromosomes at interphase and hence the genome (Zhimulev, 2001). These are also an excellent tool to study phylogenetic relationships among closely related species and are used to distinguish members of a complex species group (García-Martínez *et al.*, 2009).

The formation of a polytene chromosome is related with the exclusion of the whole process of mitosis after each DNA duplication. As a result, the cell cycle consists only of two periods: synthesis and inter-synthesis, at the end of which, the sister chromatids do not segregate, but remain paired one with each other in different degrees (Koltzoff, 1934 and Bauer, 1935). Hence the purpose of the present study is to try to reconcile the various chromosomal preparations which have been published.

MATERIALS AND METHODS

Mosquito rearing: Pure culture of *Culex quinquefasciatus* mosquitoes were reared in laboratory (Insect Microbial and herbal control laboratory, Department of Zoology, MLSU, Udaipur, Rajasthan). Field collected larva reared to adult and identified for species and then pure culture is maintained at temperature 28 ± 2 and with relative humidity between 70-80% in the laboratory. The larvae fed with dog biscuits and yeast powder in the ratio 3:1. 10% Sucrose solution and blood meal were used for adult. Larvae were reared one egg raft to a pan about 29 x 17 x 4 cm.

Mosquito salivary gland dissection and polytene chromosome preparation: D.V. Jensen (1955) has explained number of methods for larval dissection. Simultaneously Russel, West, and Manwell (1946) and Trembley (1955) cited good literature about it. Accordingly, a larva was placed with dorsal side up in a drop of 5 percent of propionic acid. The best preparations were of salivary glands from last 4th-instar larvae which are generally large and just ready to pupate. The glands were fixed in Carnoy's fixative for 1 min. Placed in 50 per cent propionic acid for 4 minutes and stained for 5 minutes in lacto-aceto-orcein which was made by dissolving 2 gm of orcein in 100 cc of a 1: 1: 1 solution of distilled water, glacial acetic acid, and lactic acid. After staining the glands were mounted in 50 per cent propionic acid. For proper spreading of

chromosomal arms, proper squash technique was applied. Applying gentle pressure with thumb followed by tapping with back side of pencil results in good spreading. These temporary preparations sealed with clear nail polish so that air bubbles may not destroy the preparation. Prepared slides are preferred to store in a refrigerator.

RESULT AND DISCUSSION

The salivary gland nuclei of *Culex quinquefasciatus* contain banded long polytene chromosomes attached to a common point known as chromocentre (Fig.1). In our preparation we observed various structural characteristics like asynapsis among various arms (Fig 2.a, b). And also heterochromatin body in few places also (Fig 2.c). The arms shows characteristic banding pattern which is the peculiar feature of these chromosome. Good preparations with the 3 chromosomes completely separated are difficult because sometimes chromocenter is not visible. Special features of *Culex quinquefasciatus* polytene chromosomes such as ectopic pairings, telomere contacts and extended length of chromosomal arms prevent a high resolution of prepared slides. Thus polytene chromosome preparation here is not efficient on a large scale and also hinders whole-genome physical mapping using polytene chromosomes.

The salivary gland chromosome complement in *Culex quinquefasciatus*, like other Culicine species so far studied, consists of three long and synapsed chromosomal arms ($2n = 6$) which is generally tend to adhere to each other to form a compact mass. One of the most striking characteristics observed in *Culex quinquefasciatus* polytene chromosomes is the asynapsis observed in several regions of some chromosome arms. The most probable cause is the failure in pairing found in these regions of polytene chromosomes arms. The reason behind this is not due to mechanical cause, but rather due to the fact that structural heterozygosity may exist in these areas.

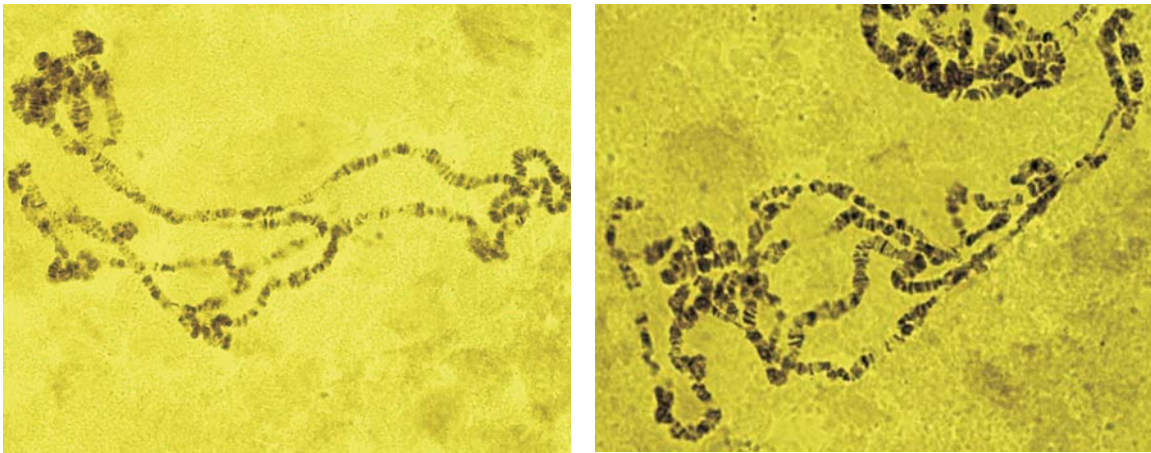


Fig 1: Polytene chromosome of *Culex quinquefasciatus*

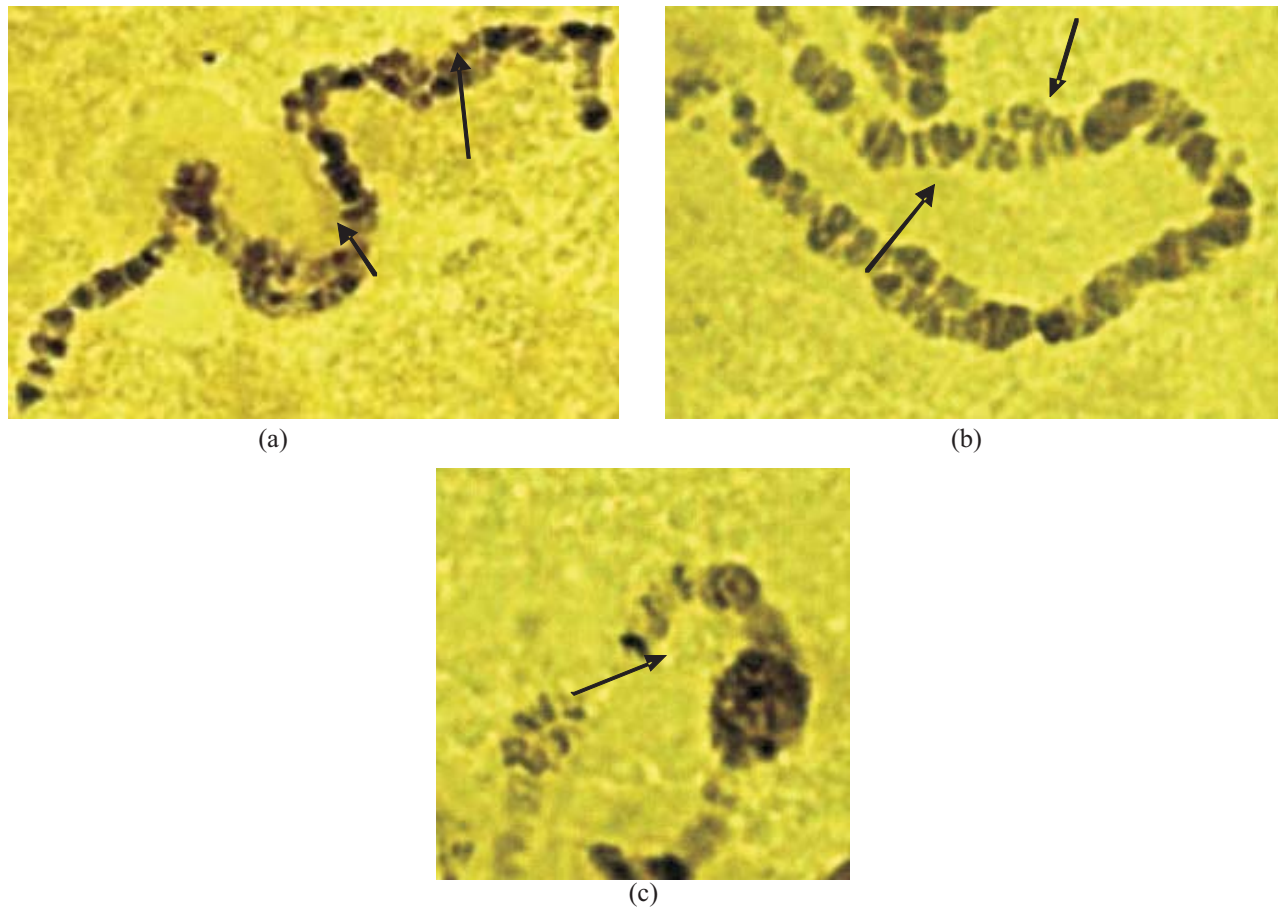


Fig.2: Microphotographs of polytene chromosome showing various structural features: (a) and (b)- asynapsis; (c) Heterochromatin body

Studies about cytogenetics of mosquitoes are important to better understand their genome organization, function and pathogenicity. For *An. gambiae* and *Ae. aegypti* mosquito's chromosome work was performed back in the 1970s and 1980s but for the *Culex quinquefasciatus* (Naumenko *et al.*, 2015) for the first time described the details of morphology, length, and proportions for the mitotic chromosomes of *Culex quinquefasciatus*. A Wells spread chromosomes are undoubtedly much more difficult to obtain in *Culex* as compared to Anopheles. In the present work also the salivary gland chromosomes of *Culex quinquefasciatus* preparation and study is described. In early studies the salivary gland chromosomes of *Culex pipiens* L are described and compared with previous descriptions of chromosomes of the *Culex pipiens* complex (Helmy, 1974). Campos *et al.* (2003) described a technique for preparing polytene Chromosomes from *Aedes aegypti*. As told before physical mapping in *Cx. quinquefasciatus* is not easy because of the poor quality of the polytene chromosomes. Thus number of attempts to create a polytene chromosome preparation using *Culex quinquefasciatus* has been made. Similarly the Malpighian tubule chromosome map for *Culex pipiens* (Zambetaki *et al.*, 1998) and *Culex quinquefasciatus*

(Campos *et al.*, 2003) and the salivary gland chromosome map for *Culex quinquefasciatus* were also developed by number of scientists, but no similarities between landmarks of different chromosome maps were found (McAbee *et al.*, 2007). These problems occurred because of poor levels of polyteny, pairing of nonhomologous chromosome regions, high frequency of ectopic contacts and poor spreading of Chromosome, which we also observed in our preparations. These Chromosome maps are essential implements for good cytogenetic studies of this medically and economically important mosquito. Thus the present analysis of *C. quinquefasciatus* the polytene chromosomes provides a cytogenetic basis for potential populational studies.

REFERENCES

- Achary, P.M.R. 1994. A simple technique for the preparation of polytene chromosomes from *Culex quinquefasciatus*. *Journal of American Mosquito Control Assessment*, **10**: 112–114.
- Arensburger, P., Megy, K., Waterhouse, R.M., Abrudan, J., Amedeo, P. 2010. Sequencing of *Culex quinquefasciatus* establishes a platform for mosquito comparative genomics. *Science*, **330**: 86–88.

- Ashburner, M. 1970. *Function and structure of polytene chromosomes during insect development. Advances in Insect Physiology*, **7**: 1–95.
- Bartholomay, L.C., Waterhouse, R.M., Mayhew, G.F., Campbell, C.L., Michel, K. 2010. Pathogenomics of *Culex quinquefasciatus* and meta-analysis of infection responses to diverse pathogens. *Science*, **330**: 88–90.
- Bauer, H. 1935. *Der Aufbau der Chromosomen aus den Speicheldrüsen von Chironomus thummi Kiefer (Untersuchungen an den Riesenchromosomen der Dipteren. I.)*. *Z. Zellforsch*, **23**: 280.
- Campos, J., Andrade, C.F., Recco-Pimentel, S.M. 2003. Malpighian tubule polytene chromosomes of *Culex quinquefasciatus* (Diptera, Culicidae). *Mem Inst Oswaldo Cruz* **98**: 383–386.
- Campos, J. 2002. *Análise Citológica de Populações de Aedes aegypti (Linnaeus, 1762) e Culex quinquefasciatus Say, 1823 (Diptera, Culicidae)*, PhD Thesis, Universidade Estadual de Campinas, Campinas, 100 pp.
- Dennhofer, L. 1968. Die Speicheldrüsenchromosomen der Stechmücke *Culex pipiens*. I. Der normale Chromosomenbestand. *Chromosoma* **25**: 1365–76.
- García-Martínez, V., Hernández-Ortiz, E., Zepeta-Cisneros, C. S., Robinson, A. S., Zacharopoulou, A. and Franz, G. 2009. *Mitotic and polytene chromosome analysis in the Mexican fruit fly, Anastrepha ludens (Loew) (Diptera: Tephritidae)*. *Genome*, **52**: 20–30.
- Helmy, R., Tewfik, A. and Ralph, B. 1974. The salivary gland chromosomes of *Culex pipiens* L. *Mosquito news*, **34** (1).
- Holt, R.A., Subramanian, G.M., Halpern, A., Sutton, G.G., Charlab, R. 2002. The genome sequence of the malaria mosquito *Anopheles gambiae*. *Science*, **298**: 129–149.
- Jensen, D.V. 1955. Methods for dissecting salivary glands in mosquito larvae and pupae. *Mosquito news*. **15**: 215–217.
- Kanda, T. 1970. The salivary gland chromosomes of *Culex pipiens fatigans* Wiedemann. *Japanese Journal of Experimental Medicine*, **40**: 335–345.
- Kitzmilller, J.B. and Clark, C.C. 1952. Salivary gland chromosomes in *Culex* mosquitos. *Genetics*, **37**: 596.
- Kitzmilller, J.B. and Kepler, W.J. 1961. Salivary gland chromosome maps in *Culex p. pipiens*. *Genetics*, **16**: 875–6.
- Koltsoff, N.K. 1934. *The structure of the chromosome in the salivary glands of Drosophila*. *Science*, **80**: 312.
- McAbee, R.D., Christiansen, J.A., Cornel, A.J. 2007. A detailed larval salivary gland polytene chromosome photomap for *Culex quinquefasciatus* (Diptera: Culicidae) from Johannesburg, *South African Journal of Medical Entomology*, **44**: 229–237.
- Naumenko, A.N., Timoshevskiy, V.A., Kinney, N.A., Kokhanenko, A.A., de Bruyn, B.S., and Lovin, D.D. 2015. Mitotic-Chromosome-Based Physical mapping of the *Culex quinquefasciatus* genome. *PLoS ONE*, **10**: e 0115737. doi: 10.1371/journal.pone.0115737
- Nene, V., Wortman, J.R., Lawson, D, Haas, B, and Kodira, C. 2007. Genome sequence of *Aedes aegypti*, a major arbovirus vector. *Science*, **316**: 1718–1723.
- Reddy, B.P., Labbe, P. and Corbel, V. 2012. *Culex* genome is not just another genome for comparative genomics. *Parasite Vectors*, **5**: 63.
- Russel, P.F., West L.S. and Manwell R.D. 1946. *Practical Malariology*, Philadelphia, pp. 245–246.
- Sharma, G. P., Parshad, R., Narang, S. L. And Kaur, P. 1969. Salivary gland chromosomes of *Culex p. fatigans*. *Research Bulletin Punjab University (N.S.)* **20**: 541–6
- Sutton E. 1942. Salivary gland type chromosomes in mosquitoes. *Proceedings of the National Academy of Science*, **28**: 268–72.
- Tewfik, H.R. and Barr, A.R. 1974. The salivary gland chromosomes of *Culex pipiens* L. *Mosquito News*, **34**: 47–54.
- Tolle, M.A. 2009. Mosquito-borne diseases. *Current Problems in Pediatric and Adolescent Health Care*, **39**: 97–140.
- Trembley, H.L. 1955. Mosquito culture techniques and experimental procedures, *American Mosquito Control Association Bulletin* No.3, pp.15–16.
- Verma, R.K., Paknaik, S., Prasad, R. and Das, C.C. 1987. Salivary gland chromosomes of *Culex quinquefasciatus*. *Caryologia* **40**: 99–108.
- Vinogradova, E.B. 2000. *Culex pipiens pipiens* mosquitoes: taxonomy, distribution, ecology, physiology, genetics, applied importance and control. I Edn. Pensoft Publishers.
- Zambetaki, A., Pasteur, N. and Mavragani-Tsipidou, P. 1998. Cytogenetic analysis of Malpighian tubule polytene chromosomes of *Culex pipiens* (Diptera: Culicidae). *Genome Biology*, **41**: 751–755.
- Zhimulev, I. F. 2001. *Polytene Chromosomes* In *Encyclopedia of life sciences*. John Wiley & Sons Edition.